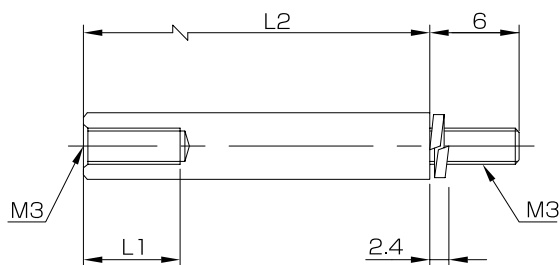
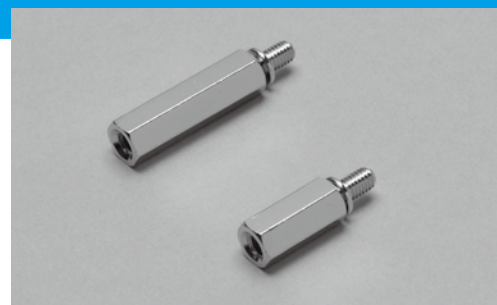
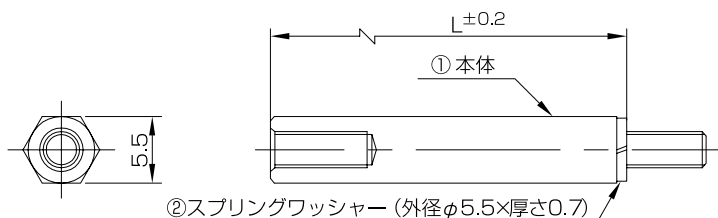


材質：快削黄銅 (C3604BD)
 カドミウム含有量 75ppm 以下
 処理：ニッケルメッキ (Ni)
 RoHS 対応品

TP523-00SWR



L2は、SWを引いた寸法です。

①本体／黄銅
 ②スプリングワッシャー／磷青铜
 外径φ5.5×厚さ0.7

●寸法表

最少注文数 10ヶ

品番	L	L1	L2	品番	L	L1	L2
TP523-06.5SWR	6.5	3.8	5.8	TP523-29.5SWR	30	6	29.3
TP523-07.5SWR	7.5	4.8	6.8	TP523-34.5SWR	35	6	34.3
TP523-08.5SWR	8.5	5.8	7.8	TP523-39.5SWR	40	6	39.3
TP523-09.5SWR	9.5	6	8.8	TP523-44.5SWR	45	6	44.3
TP523-11.5SWR	11.5	6	10.8	TP523-49.5SWR	50	6	49.3
TP523-14.5SWR	14.5	6	13.8	TP523-54.5SWR	55	6	54.3
TP523-17.5SWR	17.5	6	16.8	TP523-59.5SWR	60	6	59.3
TP523-19.5SWR	19.5	6	18.8	TP523-64.5SWR	65	6	64.3
TP523-24.5SWR	24.5	6	23.8	TP523-69.5SWR	70	6	69.3